



TOBACCO ENGINEERING



## **BENEFITS**

- Stainless Steel Construction
- Very high accuracy (< +/-0.3%)
- Simple design easy to operate and maintain
- On-board PLC control
- Full Colour touch sensitive screen
- Optional on-board data-logging (SCADA) facility

## **WEIGHING CONVEYOR**

### **ONE WEIGHING CONVEYOR FOR ALL YOUR TOBACCO WEIGHING REQUIREMENTS**

The LTL Group are designers and manufacturers of bespoke process equipment for the world tobacco industries.

The LTL Weighing Conveyor provides online weighing and flow control for a range of process situations, these range from simple totalising functions through to complex proportional add-back and / or addition control systems. The Weigher is robustly constructed to provide the stiffness necessary to give repeatable high accuracy which surpasses all other weigh systems in its class.

Modern cantilever beam load cells simplify the mechanical design of the machine and eliminate inaccuracy through mechanical losses that are associated with flexure type designs. The Weigher can be inclined to more than 15 degrees without loss of accuracy, a feature which in itself can often eliminate an additional transition conveyor and ease installation in many factory layouts.

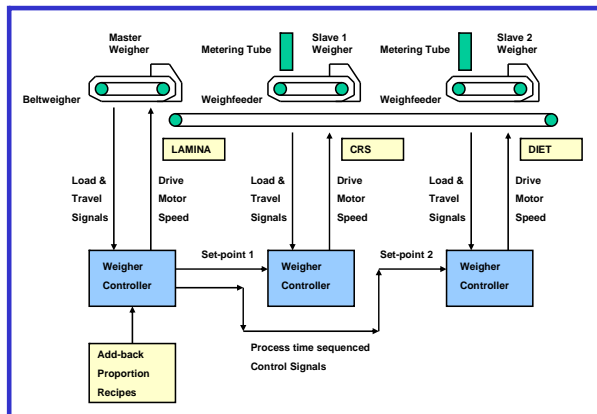
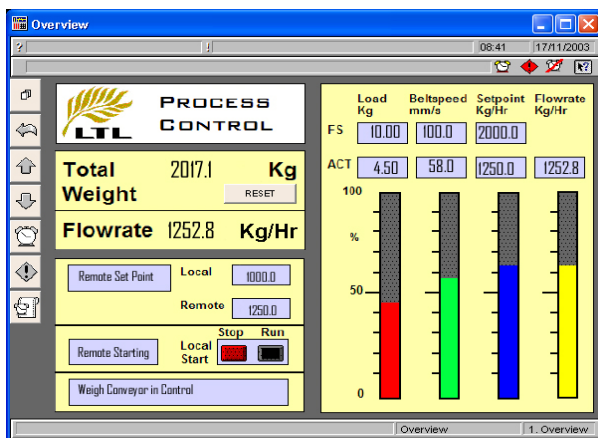
A range of sizes are available to suit most product types and process requirements and all are supplied with a variable speed drive as standard which, even in fixed speed applications, can ease the commissioning process.

# WEIGHING CONVEYOR

## MAIN FEATURES

### ELECTRONIC FEATURES

- Modern Style HMI featuring an easy to use touch screen
- Two sizes of screen available, a simple but effective 6 inch LCD or an advanced 10 inch PC style option
- Graphical representations of live data including bar graphs and real time trends
- Totally self contained unit, especially if the Profi-bus option is specified, the only connections to the Weigher are a 230vac supply and the Profi-bus!
- Easy to commission and operate, all parameters are available via the HMI and are described using plain and simple terminology



### MECHANICAL FEATURES

- Unrivalled performance providing better than 0.25% accuracy in a box off test
- The ability to incline the band without loss of accuracy
- Dead weight belt tensioning mechanism ensures a consistent accuracy over the life of the belt
- Weigh quality constant density polyester belt
- Modern load weighing system utilising a matched pair of cantilever beam load cells, eliminating the need for flexures
- Simple belt removal means that a damaged belt could be changed between shifts (< 2 hours)
- All models feature an inverter drive, essential for variable speed applications but also beneficial for speed setting in fixed speed applications
- A robust belt travel sensor comprising of a heavy duty tail drum mounted incremental encoder
- Automatic belt tracking is standard via infra-red diffuse reflective sensors and an electrically driven actuator adjusting the tracking roller
- Belt cleaning via a deadweight scraper assembly mounted beneath the head roll